

**Sample Request for Quotations (Products)
Order Against Non-Judiciary Contract, Incl. GSA Schedule
Lowest Price, Technically Acceptable**

Request for Quotation

RFQ Number:

Request Date:

To:

Special Notes:

This is a request for **Open Market Pricing**.

Items requested are using Haworth, ESI, National, and OFS product numbers; however, we are requesting Haworth, ESI, National, OFS, or equal. We are seeking Finish Options in Grade A or equal.

All items should be quoted **F.o.b. Destination**

Quotes may be e-mailed to the below listed address by **July 19, 2021**. **Submit a quotation by using the attached quote sheet.**

A fixed price award from this RFQ will be made based on the lowest priced, technically acceptable offer. Delivery is desired within 56 days after receipt of order (ARO).

Quotes and questions concerning this RFQ should be addressed to Brett Hagy at US District Courts – Western Arkansas, *30 S 6th Street, Fort Smith, AR 72901, (479-709-5454), and brett_hagy@arwd.uscourts.gov (cc: sarah_luginbuhl@arwd.uscourts.gov).*

The **Delivery Address** for this purchase will be:

30 S 6th Street, Suite #10308
Fort Smith, AR 72901

Sincerely,

Brett Hagy
Contracting Officer

Attachment

Page | 1

Quote Sheet for RFQ Number: _____

Item No.	Description	Quantity	Unit	Unit Price	Extended Price
1	WM-P32 / 32"W P.E.T. Wire Manager (OFS)	1	Each		
2	108016 / Cinque 25.75x27.75x32.5/37.5 Mid-Back Swivel (OFS)	2	Each		C4N - 5-Prong With Standard Casters (Base, Cinque) Pal - Polished Aluminum (Base Finish) 3 - Grade 3 Material (Grade) Malt - Maharam Lariat (Grade 3 Material) 3012306 - Taupe 010 (Fabric, Maharam Lariat)
3	UC-2419 / 27.5x25x29.5 Utility Cart, Meeting Room (OFS)	1	Each		~3 - Laminate (Finish) Dsp - Desert (Dsp) (Finish, Laminate) Era - Era (Pull) Bko - Onyx (Pull Finish)
4	6-MCT-22/36.25 / 22W x 36.25 Rectangular Worksurface (OFS)	1	Each		T - T High-Py Edge (Material) ~W/W - Tfl Wood Grain With 2Mm Py Edge (Top Finish) D2 - Desert (D2) (Top Finish, Tfl Wood Grains) Ej - Square (Edge) D2 - Desert (D2) (Edge Finish, Tfl) G1 - No Grommet (Grommet) G1 - No Grommet (Grommet Finish) ASF - No Cutout (Power Cutout)
5	6-3031HDW2 / 30" x 30.5" Organizer with Doors (OFS)	3	Each		T - Tfl (Material) D2 - Desert (D2) (Chassis Finish) ~Sp - Tfl Wood Grain (Door Finish) D2 - Desert (D2) (Door Finish) Lck1 - Requires 1 Lock Core, Locking (Lock)
6	WM-P32 / 32"W P.E.T. Wire Manager (OFS)	1	Each		
7	6-3655BC / 36" X 14" X 55" Bookcase, Two Adjustable Shelves, 1 Stationary Shelf, Finished Back (OFS)	1	Each		T - Tfl (Material) D2 - Desert (D2) (Chassis Finish) D2 - Desert (D2) (Adjustable Shelf Finish)
8	NS6-1010046 / Staks Tops 36"W X 19"D X 1.125"H ----- Special feature: size (OFS)	1	Each		T - Tfl High-Py Edge (Material) ~W/W - Tfl Wood Grain With 2Mm Py Edge (Top Finish) D2 - Desert (D2) (Top Finish, Tfl Wood Grains) Ej - Square (Edge) D2 - Desert (D2) (Edge Finish, Tfl) G1 - No Grommet (Grommet) G1 - No Grommet (Grommet Finish) ASF - No Cutout (Power Cutout)
9	CP-1 / 4 x 4 Clamp Plate (OFS)	6	Each		
10	6-4231HDW2 / 42" x 30.5" Organizer with Doors (OFS)	1	Each		T - Tfl (Material) D2 - Desert (D2) (Chassis Finish) ~Sp - Tfl Wood Grain (Door Finish) D2 - Desert (D2) (Door Finish) Lck1 - Requires 1 Lock Core, Locking (Lock)
11	6-MCT-45.75/22 / 45.75W x 22D Rectangular Worksurface (OFS)	1	Each		T - Tfl High-Py Edge (Material) ~W/W - Tfl Wood Grain With 2Mm Py Edge (Top Finish) D2 - Desert (D2) (Top Finish, Tfl Wood Grains) Ej - Square (Edge) D2 - Desert (D2) (Edge Finish, Tfl) G1 - No Grommet (Grommet) G1 - No Grommet (Grommet Finish) ASF - No Cutout (Power Cutout)
12	6-AMPC / 48" - 65.9375" x 11.75" Modesty Panel, Frosted Acrylic (OFS)	1	Each		St - 30 Inches (Width) 25 - Plus 1/4" (plus Fraction)

Item No.	Description	Quantity	Unit	Unit Price	Extended Price
13	6-MCT-66/30 / 66W 30D Rectangular Worksurface (OFS)	1	Each		T - TB - Hpl-Ply Edge (Material) -W/W - TB - Wood Grain With 24mm Pp Edge (Top Finish) D2 - Desert (D2) (Top Finish, TFL Wood Grains) E3 - Square (Edge) D2 - Desert (D2) (Edge Finish, TFL) G1 - No Grommet (Grommet) G1 - No Grommet (Grommet Finish) A9F - No Cutout (Power Cutout)
14	NS6-1010047 / Staks Tops 90"W X 19"D X 1.125"H ----- Special feature: size (OFS)	1	Each		T - TB - Hpl-Ply Edge (Material) -W/W - TB - Wood Grain With 24mm Pp Edge (Top Finish) D2 - Desert (D2) (Top Finish, TFL Wood Grains) E3 - Square (Edge) D2 - Desert (D2) (Edge Finish, TFL) G1 - No Grommet (Grommet) G1 - No Grommet (Grommet Finish) A9F - No Cutout (Power Cutout)
15	6-MPB-2 / Single Bracket (OFS)	2	Each		Bko - Onyx (Finish)
16	6-KMPB / TFL Wood Grain and TFL Solid Colors, 30"-47.9375" x 11.75" Modesty Panel (OFS)	1	Each		46 - 46 Inches (Width) 0 - None (plus Fraction) -W - TB Wood Grain (Finish) D2 - Desert (D2) (Finish)
17	6-NW1619MPD1 / Worksurface Height Box/File Pedestal No Riser Support. Use with 22"D Worksurfaces, 15.625"W x 19.375"D x 27.875"H (OFS)	1	Each		T - TB (Material) D2 - Desert (D2) (Chassis Finish) D2 - Desert (D2) (Top Drawer Finish) D2 - Desert (D2) (Bot. on Drawer Finish) Lw - Unfinished (Back) Lk1 - Requires 1 Lock Core, Locking (Lock) Parallel - Parallel (Pull) Bko - Onyx (Pull Finish)
18	6-NW3622MPD3 / Worksurface Height File/File Pedestal No Riser Support, Use with 22"D Worksurfaces, 36"W x 21.875"D x 27.875"H (OFS)	1	Each		T - TB (Material) D2 - Desert (D2) (Chassis Finish) D2 - Desert (D2) (Top Drawer Finish) D2 - Desert (D2) (Bot. on Drawer Finish) Lw - Unfinished (Back) Lk1 - Requires 1 Lock Core, Locking (Lock) Parallel - Parallel (Pull) Bko - Onyx (Pull Finish)
19	6-NW1630MPD3 / Worksurface Height File/File Pedestal No Riser Support, Use with 30"D Worksurfaces, 15.625"W x 29.875"D x 27.875"H (OFS)	1	Each		T - TB (Material) D2 - Desert (D2) (Chassis Finish) D2 - Desert (D2) (Top Drawer Finish) D2 - Desert (D2) (Bottom Drawer Finish) Lw - Unfinished (Back) Lk1 - Requires 1 Lock Core, Locking (Lock) Parallel - Parallel (Pull) Bko - Onyx (Pull Finish)
20	NS6-1010291 / Staks Panel 18"W X 1"D X 27.875"H (OFS)	2	Each		T - TB (Material) D2 - Desert (D2) (Finish, TFL)
21	NS6-1010292 / Staks Peds 15.625"W X 17.875"D X 27.875"H (OFS)	1	Each		T - TB (Material) D2 - Desert (D2) (Chassis Finish) D2 - Desert (D2) (Top Drawer Finish) D2 - Desert (D2) (Bot. on Drawer Finish) Lw - Unfinished (Back) Lk1 - Requires 1 Lock Core, Locking (Lock) Parallel - Parallel (Pull) Bko - Onyx (Pull Finish)
22	NS6-1010293 / Staks Tops 48"W X 18"D X 1.125"H (OFS)	1	Each		T - TB - Hpl-Ply Edge (Material) -W/W - TB - Wood Grain With 24mm Pp Edge (Top Finish) D2 - Desert (D2) (Top Finish, TFL Wood Grains) E3 - Square (Edge) D2 - Desert (D2) (Edge Finish, TFL) G1 - No Grommet (Grommet) G1 - No Grommet (Grommet Finish) A9F - No Cutout (Power Cutout)
23	NS6-1010294 / Staks Tops 30"W X 18"D X 1.125"H (OFS)	1	Each		T - TB - Hpl-Ply Edge (Material) -W/W - TB - Wood Grain With 24mm Pp Edge (Top Finish) D2 - Desert (D2) (Top Finish, TFL Wood Grains) E3 - Square (Edge) D2 - Desert (D2) (Edge Finish, TFL) G1 - No Grommet (Grommet) G1 - No Grommet (Grommet Finish) A9F - No Cutout (Power Cutout)
24	6-6019SC / Floor Storage Cushion, Use with 60" wide floor storage, position over entire unit (OFS)	1	Each		Grade 7 Material (Grade, Cushions) Maharam Boundary (Grade 7 Material) Albare 003 Fabric, Maharam Boundary 466193)

Item No.	Description	Quantity	Unit	Unit Price	Extended Price
25	6-NL6019FSR / 60x19x23 Floor Storage - w/36"W Lateral File Drawer on Right (OFS)	1	Each		T - Ttl (Material) -SS - Tl - Solid Color With 2Mm Pp Edge (Top Finish) B12 - Black (B1) (Top Finish) B12 - Black (B1) (Edge Finish) B12 - Black (B1) (Chassis Finish) B12 - Black (B1) (Top Drawer Finish) B12 - Black (B1) (Do on Drawer Finish) X9 - No Febr (Felt) Lck1 - Requires 1 Lock Core, Locking (Lock) Parallel - Parallel (Pull) 5gld - Gold (Pull Finish)
26	3VT-LX-C4848-24 / Victory LX Table Base 3-Leg, Adj cross channels 59.1" - 82.2" both sides, Ht Adj w/ 23" feet (ESI)	1	Each		Black Finish Lr (FNISII)
27	NCCB001 / CASEGOODS, LOCK CORE WITH KEY, BLACK, NO 001 (NATIONAL)	4	Each		
28	WW1830PFHM / WAVEWORKS, 18DX30W, STORAGE UNIT, HINGED DOOR, METAL (NATIONAL)	3	Each		5 - Integrated (PULL) Ks1B - Specify 1 Black Core Separate (LOCK) Std - Standard,Non-Metallic Paint (PAINT GROUP) 462 - Cinder (PAINT COLOR)
29	WW1836PFHM / WAVEWORKS, 18DX36W, STORAGE UNIT, HINGED DOOR, METAL (NATIONAL)	1	Each		5 - Integrated (PULL) Ks1B - Specify 1 Black Core Separate (LOCK) Std - Standard,Non-Metallic Paint (PAINT GROUP) 462 - Cinder (PAINT COLOR)
30	WW1850BCHLL / WAVEWORKS, 18WX50H, BOOKCASE, LEFT DOOR, SET ON, LAMINATE (NATIONAL)	1	Each		Ks1B - Specify 1 Black Core Separate (LOCK) Pt - Por co (DRAWER/DOOR LAMINATE COLOR) 488 - Frosty White (CHASSIS LAMINATE COLOR)
31	WW1850BCOL / WAVEWORKS, 18WX50H, BOOKCASE, OPEN, SET ON, LAMINATE (NATIONAL)	1	Each		488 - Frosty White (CHASSIS LAMINATE COLOR)
32	WW233629PU10L / WAVEWORKS, 23DX36WX29H, PEDESTAL, RIGHT, MULTIFILE BB/E/L/E (NATIONAL)	1	Each		87Mb - Beam,Cinder (PULL) X - No Grommet (GROMMET) Ks2B - Specify 2 Black Core Separate (LOCK) 488 - Frosty White (DRAWER/DOOR LAMINATE COLOR) 488 - Frosty White (CHASSIS LAMINATE COLOR)
33	WW2336LFM2L / WAVEWORKS, 23DX36W, LATERAL FILE, UNDERSURFACE, 2 DRAWER, LA (NATIONAL)	1	Each		87Mb - Beam,Cinder (PULL) X - No Grommet (GROMMET) Ks1B - Specify 1 Black Core Separate (LOCK) 488 - Frosty White (DRAWER/DOOR LAMINATE COLOR) 488 - Frosty White (CHASSIS LAMINATE COLOR)
34	WW2336PUHL / WAVEWORKS, 23DX36W, DOUBLE DOOR, UNDERSURFACE, LAMINATE (NATIONAL)	2	Each		87Mb - Beam,Cinder (PULL) X - No Grommet (GROMMET) Ks1B - Specify 1 Black Core Separate (LOCK) 488 - Frosty White (DRAWER/DOOR LAMINATE COLOR) 488 - Frosty White (CHASSIS LAMINATE COLOR)
35	WW24A72WSSDL / WAVEWORKS, 24DX72W, STORAGE CREDENZA SURFACE, RECT, HPI (NATIONAL)	2	Each		M - Main (SUPPORT) V488 - So ened Pvc,Frosty White (RIM PROFILE) X - No Grommet (GROMMET) X - No Wire Manager (WIRE MANAGER COLOR) Std - Standard Laminate (TOP LAMINATE GROUP) 488 - Frosty White (LAMINATE COLOR)
36	WW3650BCOHMARL / WAVEWORKS, 36WX50H, BOOKCASE, SET-ON, STYLE A, RIGHT, LAM (NATIONAL)	1	Each		P - Portico (DRAWER/DOOR LAMINATE COLOR) 488 - Frosty White (CHASSIS LAMINATE COLOR)

Item No.	Description	Quantity	Unit	Unit Price	Extended Price
37	WW3650BCOHTML / WAVEWORKS, 36WX50H, BOOKCASE, SET-ON, STYLE B, LAM 9 (NATIONAL)	2	Each		Pt - Portico (DRAWER/DOOR LAMINATE COLOR) 488 - Frosty White (CHASSIS LAMINATE COLOR)
38	NCCB002 / CASEGOODS, LOCK CORE & KEY, BLACK, NO 002 (NATIONAL)	6	Each		
39	WURA-2442-LJSC / Worksurface, Rect, 24Dx42W, Lam, Edgeband, Std Core, No Cbl Mgt (HAWORTH)	1	Each		Linen, Grade A Linen, Grade A
40	WURA-3072-LJSC / Worksurface, Rect, 30Dx72W, Lam, Edgeband, Std Core, No Cbl Mgt, (HAWORTH)	1	Each		Linen, Grade A Linen, Grade A
41	ZUBF-0000-PN / Flush Mount Plate (HAWORTH)	1	Each		
42	LSET-2 / HW, Lock Set, Keyed Alike, Lock Plug And Key, Qty Of 2 (HAWORTH)	2	Each		Black, Grade A
43	STP-W26-TH / Pip Table, 26H, Hard Glide, Wood (HAWORTH)	1	Each		Walnut Hardwood (Vh) Walnut Hardwood, Grade C Charcoal, Grade A
44	JCPT-0230-SJA / X Series, Combo Unit, 27.5"H x 30"W, File(L), Box, Box(R), LatFile, Ptd Drw Frnt, Ptd Lock Rail, J Pull, TchLch, A .Glides (HAWORTH)	1	Each		Charcoal, Grade A Black, Grade A
45	JTPL-1830-JYJYS / X Series, Common Top, Prd Frnt, Lam Top, 18.75Dx30W, 3mm Plstc Ustr, 1mm LH, 3mm Bck, 1mm RH (HAWORTH)	1	Each		Linen, Grade A Linen, Grade A
46	JCTB-24 / X Series, Pedestal, Cushion Top Kit, 24"D (HAWORTH)	1	Each		Floyd Kvadrat (S6) Floyd Kvadrat (S6) - 1760, Grade B
47	JPMA-24-SJC / X Series, Pedestal, Mobile, B/F, 24"D, Ptd Drw Frnt, Stl Lkrl, J Pull, Cstr, No Top (HAWORTH)	1	Each		Charcoal, Grade A Black, Grade A
48	SPLM-5037 / Tackboard, Wall-Mounted, Universal 22In. X 42In. (HAWORTH)	1	Each		SPLM-5037 / Tackboard, Wall-Mounted, Universal 22In. X 42In.

SUBMISSION OF QUOTE AND EVALUATION OF OFFERS

1. The following judiciary provisions, that the contracting officer has indicated are applicable, are incorporated in this solicitation: [*Contracting officer check as appropriate.*]

Provision B-1, Solicitation Provisions Incorporated by Reference (SEP 2010)

This solicitation incorporates one or more solicitation provisions by reference, with the same force and effect as if they were given in full text. Upon request, the contracting officer will make their full text available. The offeror is cautioned that the listed provisions may include blocks that must be completed by the offeror and submitted with its quotation or offer. In lieu of submitting the full text of those provisions, the offeror may identify the provision by paragraph identifier and provide the appropriate information with its quotation or offer. Also, the full text of a solicitation provision may be accessed electronically at this address: <http://www.uscourts.gov/procurement.aspx>.

Provision 2-100, Brand Name or Equal (APR 2013)

Provision 3-135, Single or Multiple Awards (JAN 2003)

(The contracting officer may incorporate additional clauses – by reference or in full text – or provisions in the above template, provided they do not duplicate or conflict with clauses which are in the GSA contract. Refer to the Guide to Judiciary Policy, Vol 14, Chapter 1, [Appx 1B](#) to determine, if the provision or clause can be included by reference or must be included in full text. If any provisions are incorporated by reference, Provision B-1 also must be marked as applicable. Use of certain clauses/provisions may require a one-time delegation of procurement authority.)

DELIVERY ORDER TERMS AND CONDITIONS

The terms and conditions in the GSA contract are invoked by referencing the GSA contract number in the delivery order. The following standard judiciary provisions and clauses are also incorporated into this request and will be included in the resulting delivery order.

1. Clause B-5, Clauses Incorporated by Reference (SEP 2010)

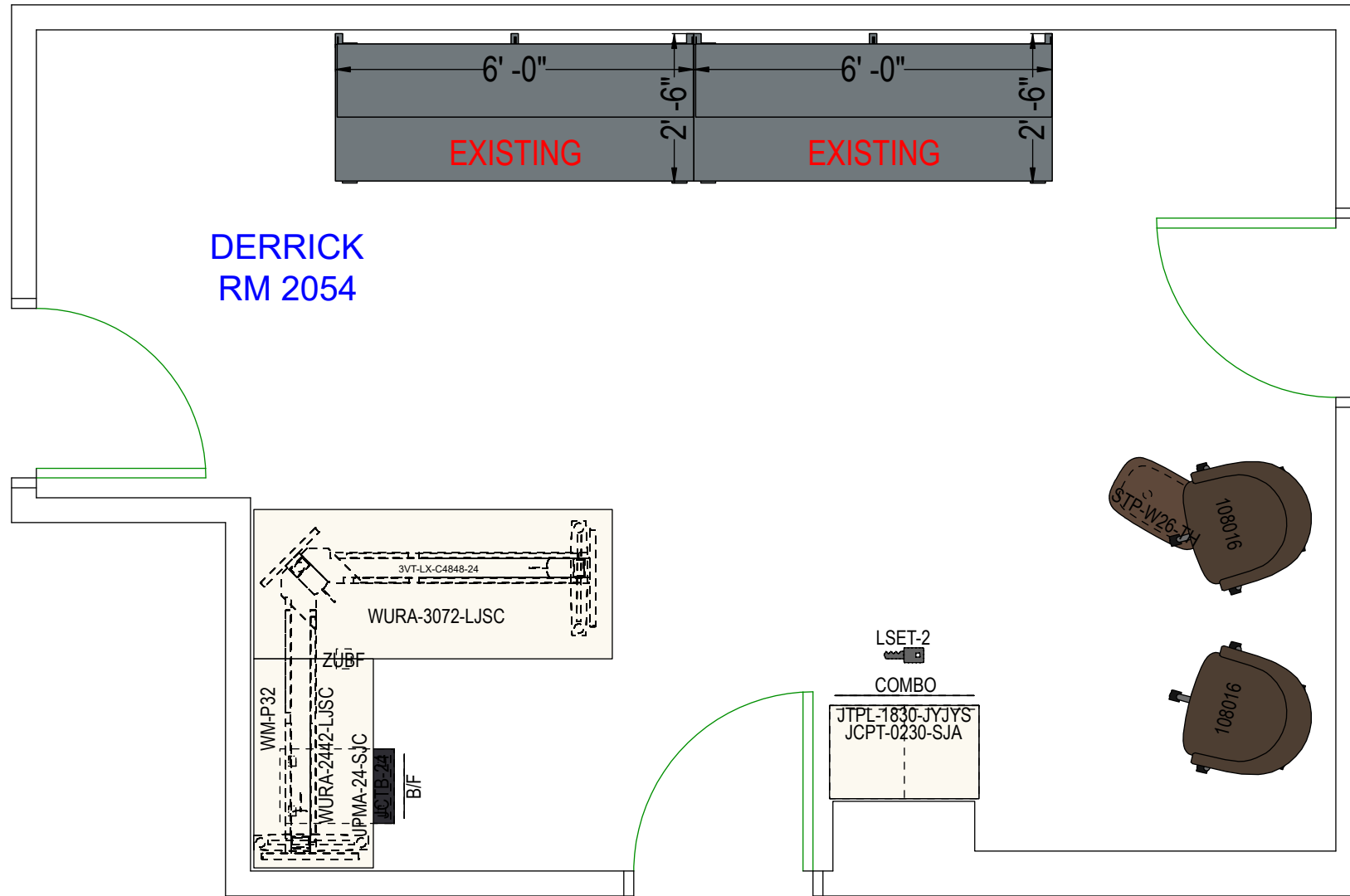
This contract incorporates one or more clauses by reference, with the same force and effect as if they were given in full text. Upon request, the contracting officer will make their full text available. Also, the full text of a clause may be accessed electronically at this address:

<http://www.uscourts.gov/procurement.aspx/>

2. The contractor shall comply with the clauses in this paragraph that the contracting officer has indicated as being incorporated in this delivery order: *[Contracting officer check as appropriate.]*

- Clause 1-15 Disclosure of Contractor Information to the Public (AUG 2004)
- Clause 2-35 F.o.b. Destination, Within Judiciary's Premises (JAN 2003)
- Clause 2-130 Energy Efficiency in Energy-Consuming Products (APR 2013)
- Clause 2-135 IEEE Standard for Environmental Assessment of Personal Computer Products (APR 2013)
- Clause 6-85 Commercial Computer Software License (APR 2013)
- Clause 6-105 California E-Waste Fee (APR 2013)
- Clause 7-30 Public Use of the Name of the Federal Judiciary (JUN 2014)
- Clause 7-35 Disclosure or Use of Information (APR 2013)
- Clause 7-115 Availability of Funds (JAN 2003)
- Clause 7-130 Interest (Prompt Payment) (JAN 2003)
- Clause 7-140 Discounts for Prompt Payment (JAN 2003)
- Clause 7-235 Disputes (JAN 2003)

****CONFIRM ALL DOOR LOCATIONS**



DERRICK RM 2054

GENERAL NOTES

1. DO NOT SCALE DRAWING.
2. DRAWING AND MATERIAL PRESENTED IS THE PROPERTY OF IOI AND MAY NOT BE DUPLICATED, USED OR DISCLOSED WITHOUT THE WRITTEN CONSENT OF IOI.
3. VERIFY ALL DIMENSIONS ON SITE AND REPORT ANY DISCREPANCIES TO IOI.
4. PRODUCT DIMENSIONS SHOWN ARE NOMINAL. STANDARD MANUFACTURING TOLERANCES SHALL APPLY.
5. PRODUCTION WILL NOT BEGIN UNTIL ORDER IS RECEIVED AND APPROVAL DRAWING SETS ARE SIGNED.

REVISIONS

REV	REVISION DESCRIPTION	DATE
1	DRAW OFFICES	5/14/2021
2	REV2 - REVISE PER FEEDBACK	6/1/2021
3	REVISIONS CONTINUED	6/7/2021
4	REV3 - REVISE PER EMAIL	6/17/2021

CLIENT APPROVAL

- APPROVED
- APPROVED, AS
- REVISE, RESUBMIT

APPROVAL

CUSTOMER NAME:

USDC FORT SMITH

SITE ADDRESS:

30 S 6TH STREET
#10308

FORT SMITH, 72901

CONTACT

BRETT HAGY

479-709-5454

PROJECT NAME:

OFFICE RELOCATION

ACCOUNT

LESLIE GARDNER
479-799-9044

DRAWING TITLE:

SPACE PLAN

DESIGNER:

Courtney Caravello

PROJECT COORD:

BRENDA

PROJECT NO:

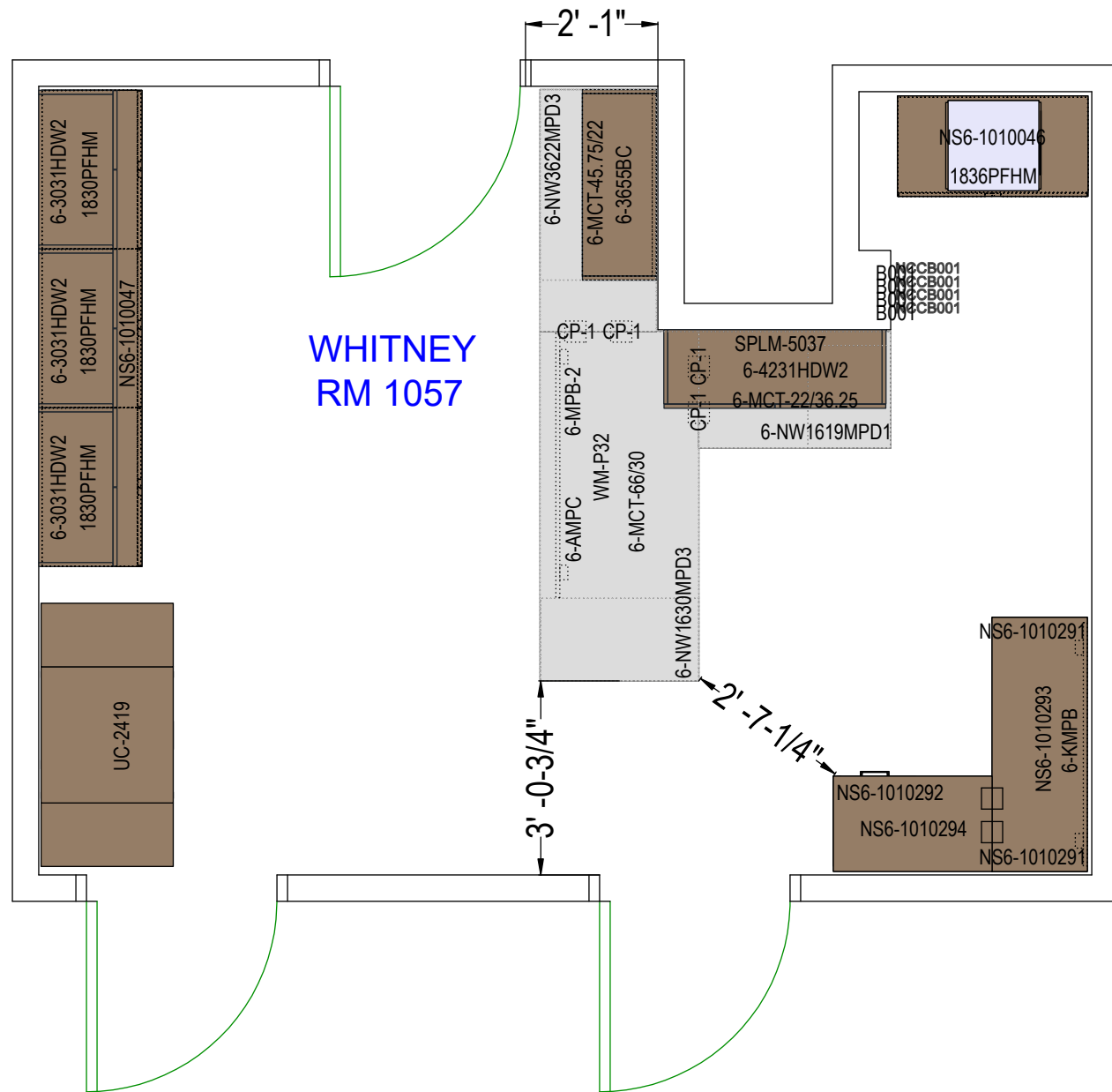
4397

SCALE:

1/4" = 1'-0"

SHEET NO:

1/4



WHITNEY RM 1057



GENERAL NOTES

1. DO NOT SCALE DRAWING.
2. DRAWING AND MATERIAL PRESENTED IS THE PROPERTY OF IOI AND MAY NOT BE DUPLICATED, USED OR DISCLOSED WITHOUT THE WRITTEN CONSENT OF IOI.
3. VERIFY ALL DIMENSIONS ON SITE AND REPORT ANY DISCREPANCIES TO IOI.
4. PRODUCT DIMENSIONS SHOWN ARE NOMINAL. STANDARD MANUFACTURING TOLERANCES SHALL APPLY.
5. PRODUCTION WILL NOT BEGIN UNTIL ORDER IS RECEIVED AND APPROVAL DRAWING SETS ARE SIGNED.

REVISIONS

REV	REVISION DESCRIPTION	DATE
1	DRAW OFFICES	5/14/2021
2	REV2 - REVISE PER FEEDBACK	6/1/2021
3	REVISIONS CONTINUED	6/7/2021
4	REV3 - REVISE PER EMAIL	6/17/2021

CLIENT APPROVAL

- APPROVED
- APPROVED, AS
- REVISE, RESUBMIT

APPROVAL

CUSTOMER NAME:

USDC FORT SMITH

SITE ADDRESS:
30 S 6TH STREET
#10308
FORT SMITH, 72901

CONTACT
BRETT HAGY
479-709-5454

PROJECT NAME:
OFFICE RELOCATION

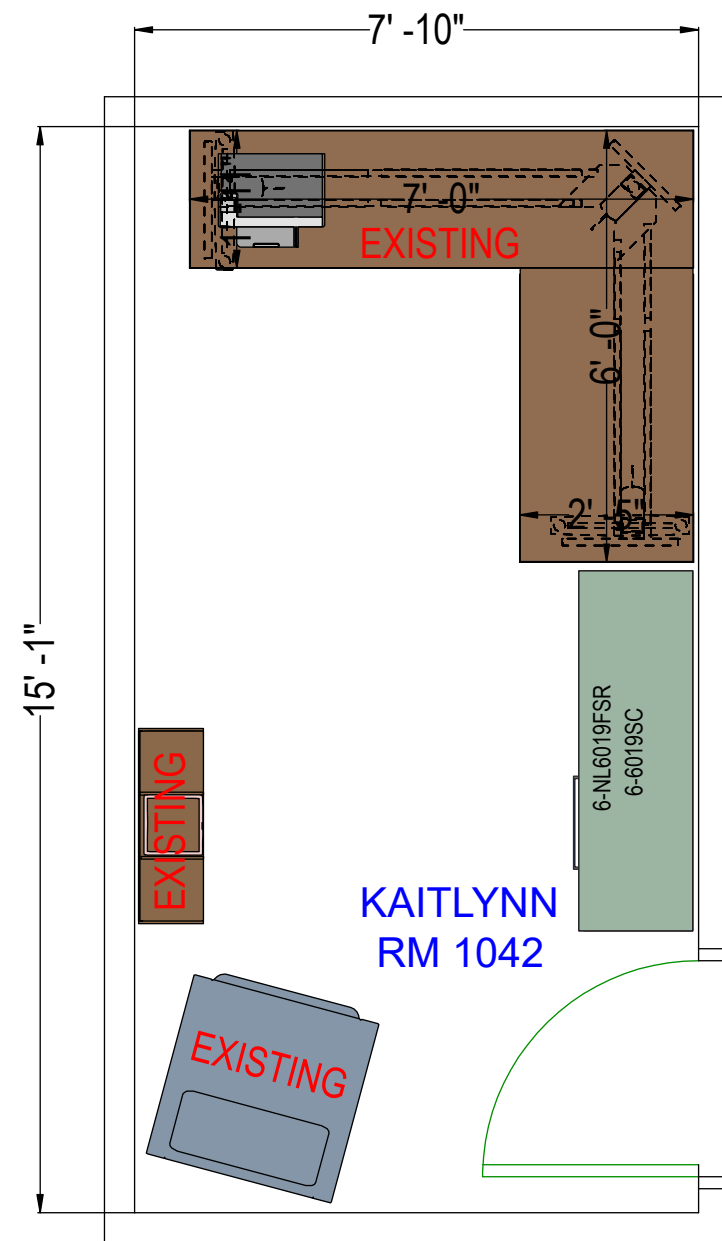
ACCOUNT
LESLIE GARDNER
479-799-9044

DRAWING TITLE:
SPACE PLAN

DESIGNER:
Courtney Caravello

PROJECT COORD: **BRENDA** PROJECT NO: **4397**

SCALE: **1/4" = 1'-0"** SHEET NO: **2/4**



KAITLYNN RM 1042

GENERAL NOTES

1. DO NOT SCALE DRAWING.
2. DRAWING AND MATERIAL PRESENTED IS THE PROPERTY OF IOI AND MAY NOT BE DUPLICATED, USED OR DISCLOSED WITHOUT THE WRITTEN CONSENT OF IOI.
3. VERIFY ALL DIMENSIONS ON SITE AND REPORT ANY DISCREPANCIES TO IOI.
4. PRODUCT DIMENSIONS SHOWN ARE NOMINAL. STANDARD MANUFACTURING TOLERANCES SHALL APPLY.
5. PRODUCTION WILL NOT BEGIN UNTIL ORDER IS RECEIVED AND APPROVAL DRAWING SETS ARE SIGNED.

REVISIONS

REV	REVISION DESCRIPTION	DATE
1	DRAW OFFICES	5/14/2021
2	REV2 - REVISE PER FEEDBACK	6/1/2021
3	REVISIONS CONTINUED	6/7/2021
4	REV3 - REVISE PER EMAIL	6/17/2021

CLIENT APPROVAL

- APPROVED
- APPROVED, AS
- REVISE, RESUBMIT

APPROVAL

CUSTOMER NAME:

USDC FORT SMITH

SITE ADDRESS:

30 S 6TH STREET
#10308

FORT SMITH, 72901

CONTACT

BRETT HAGY

479-709-5454

PROJECT NAME:

OFFICE RELOCATION

ACCOUNT

LESLIE GARDNER
479-799-9044

DRAWING TITLE:

SPACE PLAN

DESIGNER:

Courtney Caravello

PROJECT COORD:

BRENDA

PROJECT NO:

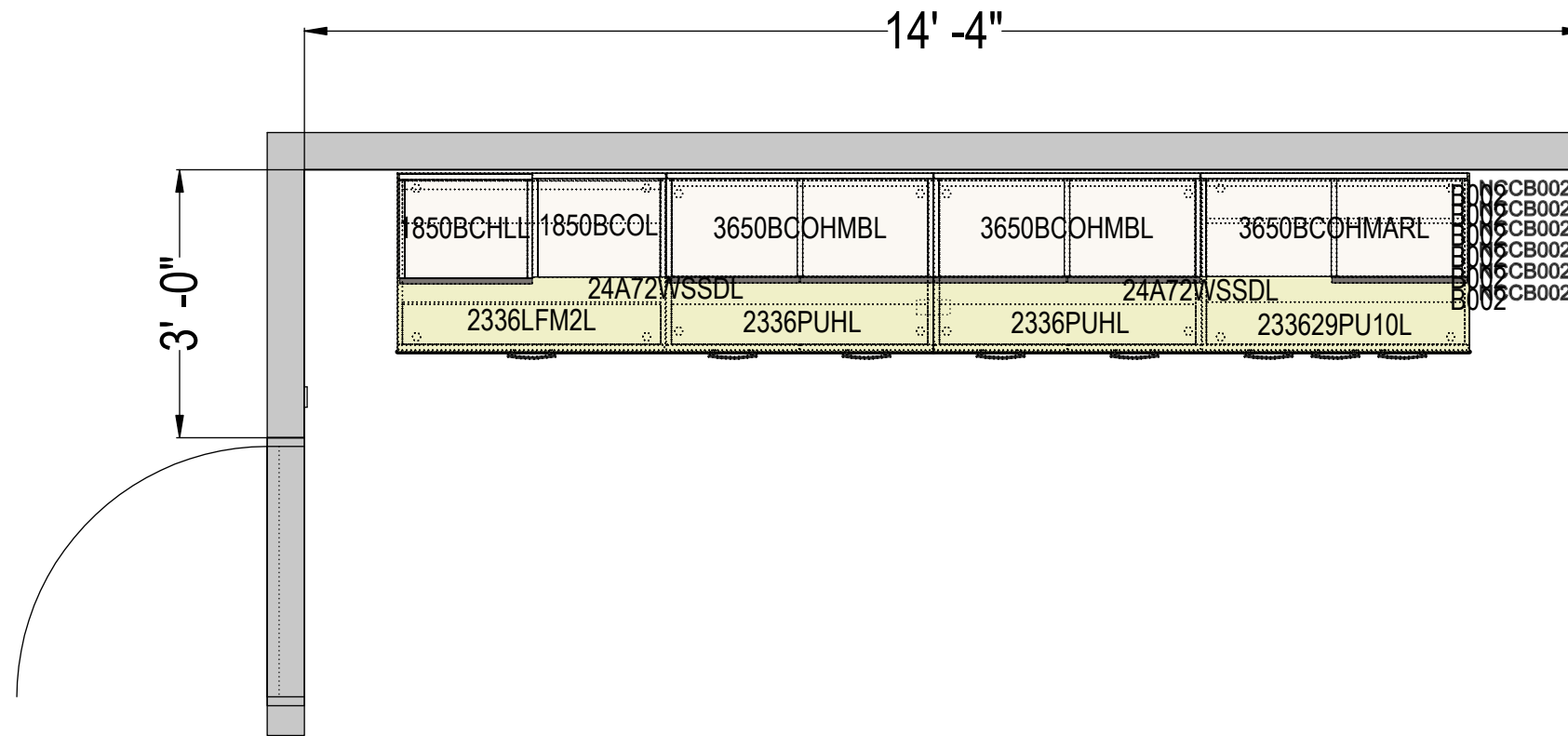
4397

SCALE:

1/4" = 1'-0"

SHEET NO:

3/4



STORAGE

GENERAL NOTES

1. DO NOT SCALE DRAWING.
2. DRAWING AND MATERIAL PRESENTED IS THE PROPERTY OF IOI AND MAY NOT BE DUPLICATED, USED OR DISCLOSED WITHOUT THE WRITTEN CONSENT OF IOI.
3. VERIFY ALL DIMENSIONS ON SITE AND REPORT ANY DISCREPANCIES TO IOI.
4. PRODUCT DIMENSIONS SHOWN ARE NOMINAL. STANDARD MANUFACTURING TOLERANCES SHALL APPLY.
5. PRODUCTION WILL NOT BEGIN UNTIL ORDER IS RECEIVED AND APPROVAL DRAWING SETS ARE SIGNED.

REVISIONS

REV	REVISION DESCRIPTION	DATE
1	DRAW OFFICES	5/14/2021
2	REV2 - REVISE PER FEEDBACK	6/1/2021
3	REVISIONS CONTINUED	6/7/2021
4	REV3 - REVISE PER EMAIL	6/17/2021

CLIENT APPROVAL

- APPROVED
- APPROVED, AS
- REVISE, RESUBMIT

APPROVAL

CUSTOMER NAME:

USDC FORT SMITH

SITE ADDRESS:

30 S 6TH STREET
#10308

FORT SMITH, 72901

CONTACT

BRETT HAGY

479-709-5454

PROJECT NAME:

OFFICE RELOCATION

ACCOUNT

LESLIE GARDNER
479-799-9044

DRAWING TITLE:

SPACE PLAN

DESIGNER:

Courtney Caravello

PROJECT COORD:

BRENDA

PROJECT NO:

4397

SCALE:

1/4" = 1'-0"

SHEET NO:

4/4